

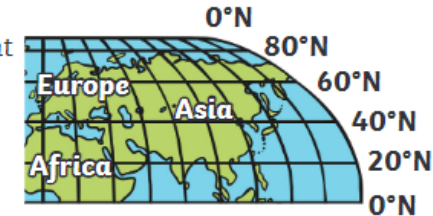


## Exploring Eastern Europe

Key Vocabulary	
<b>agriculture</b>	Land used for growing crops and keeping livestock.
<b>arable</b>	Land used for producing crops.
<b>climate</b>	The usual or average <b>weather</b> conditions over a long period of time.
<b>continent</b>	A large area of land divided into <b>countries</b> .
<b>country</b>	An area defined by its people, culture, language, geography and government.
<b>human geography</b>	Anything in an area that is not naturally occurring and that has been shaped by people.
<b>landscapes</b>	An area of land and everything you can see on it.
<b>physical geography</b>	Anything in an area that is naturally occurring.
<b>population</b>	The number of people living in an area.
<b>precipitation</b>	Water particles that fall from a cloud as rain, hail, sleet or snow.
<b>weather</b>	The specific atmospheric conditions on a given day including temperature and rainfall.

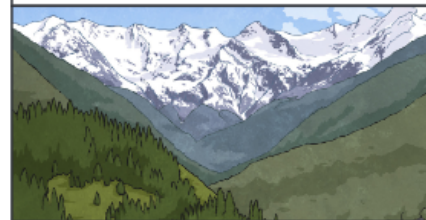
## Europe

- There are 51 **countries** in Europe and 742 million people living there which is 10% of the world's **population**.
- The **continent** is in the northern hemisphere with the Arctic Ocean to the north, the Atlantic Ocean to the west and the Mediterranean Sea to the south.
- Eastern Europe crosses from 70°N - 40°N.
- The highest mountain is Mount Elbrus in Russia (5642m).
- The longest river is the Volga river in Russia (3693 km).
- There are many different **landscapes**, **climates**, **physical** and **human** characteristics all within this area.



### Physical Geography

Oceans, lakes, mountains, rivers, **weather** and **climate** patterns.



### Human Geography

**Country**/region boundaries, buildings, roads, language, religion, government.

