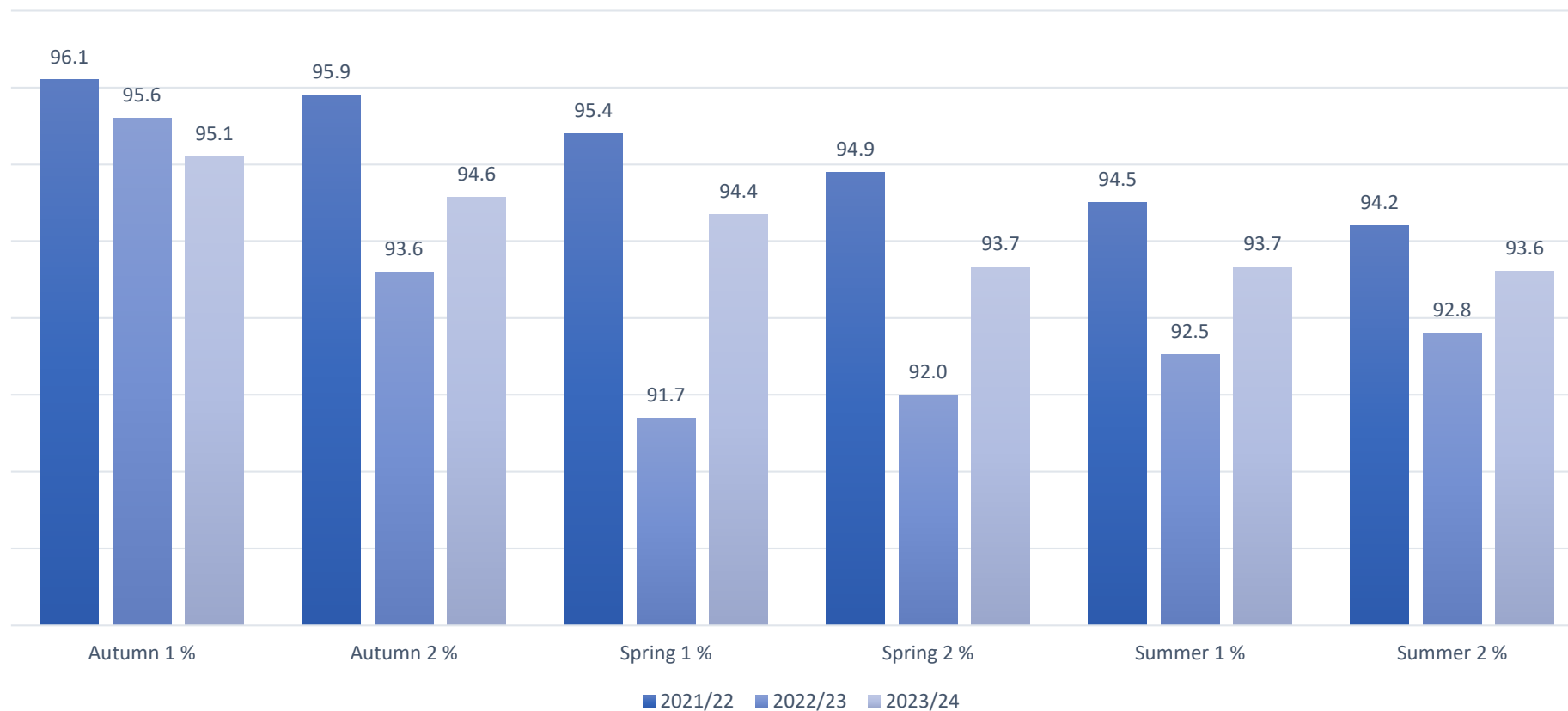


Loxdale Primary School

Annual Attendance Comparison

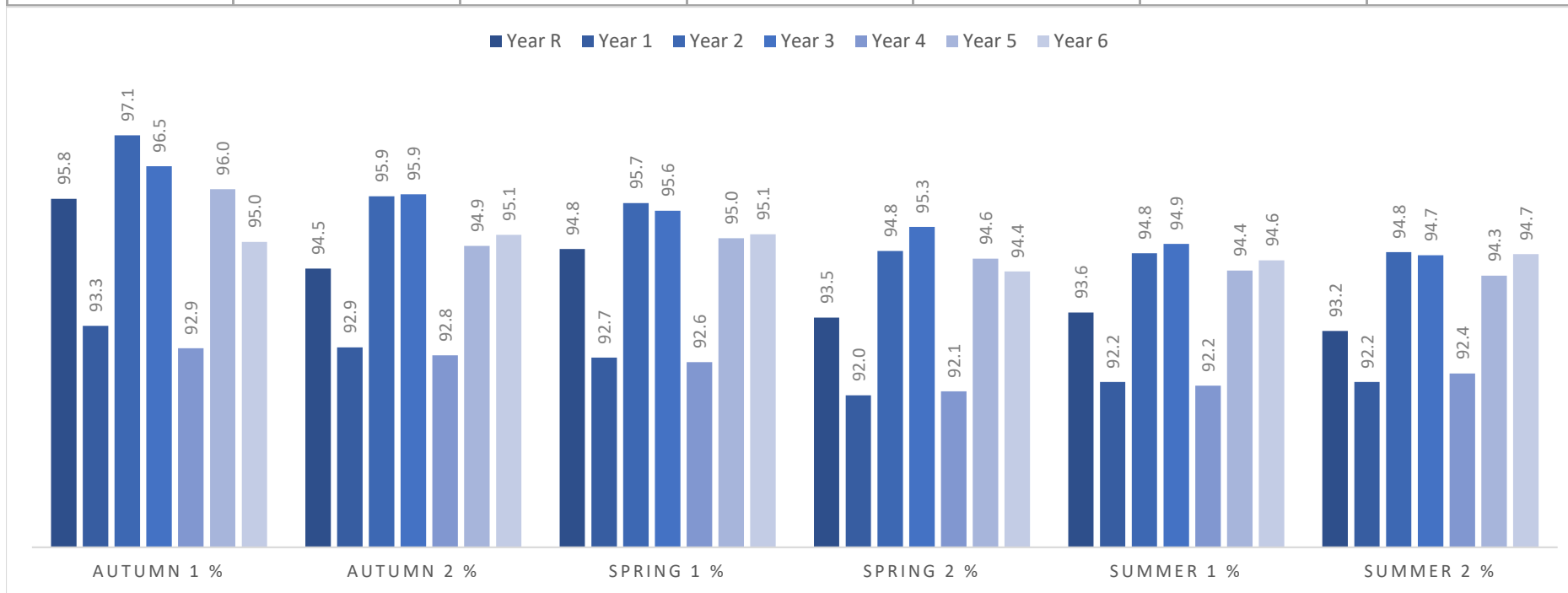
Term → Year ↓	Autumn 1 %	Autumn 2 %	Spring 1 %	Spring 2 %	Summer 1 %	Summer 2 %
2021/22	96.1	95.9	95.4	94.9	94.5	94.2
2022/23	95.6	93.6	91.7	92.0	92.5	92.8
Dif +/-	● -0.5	● -2.3	● -3.7	● -2.9	● -2.0	● -1.4
2023/24	95.1	94.6	94.4	93.7	93.7	93.6
Dif +/-	● -0.5	● 1.0	● 2.6	● 1.7	● 1.2	● 0.8



Loxdale Primary School

Annual Attendance Comparison

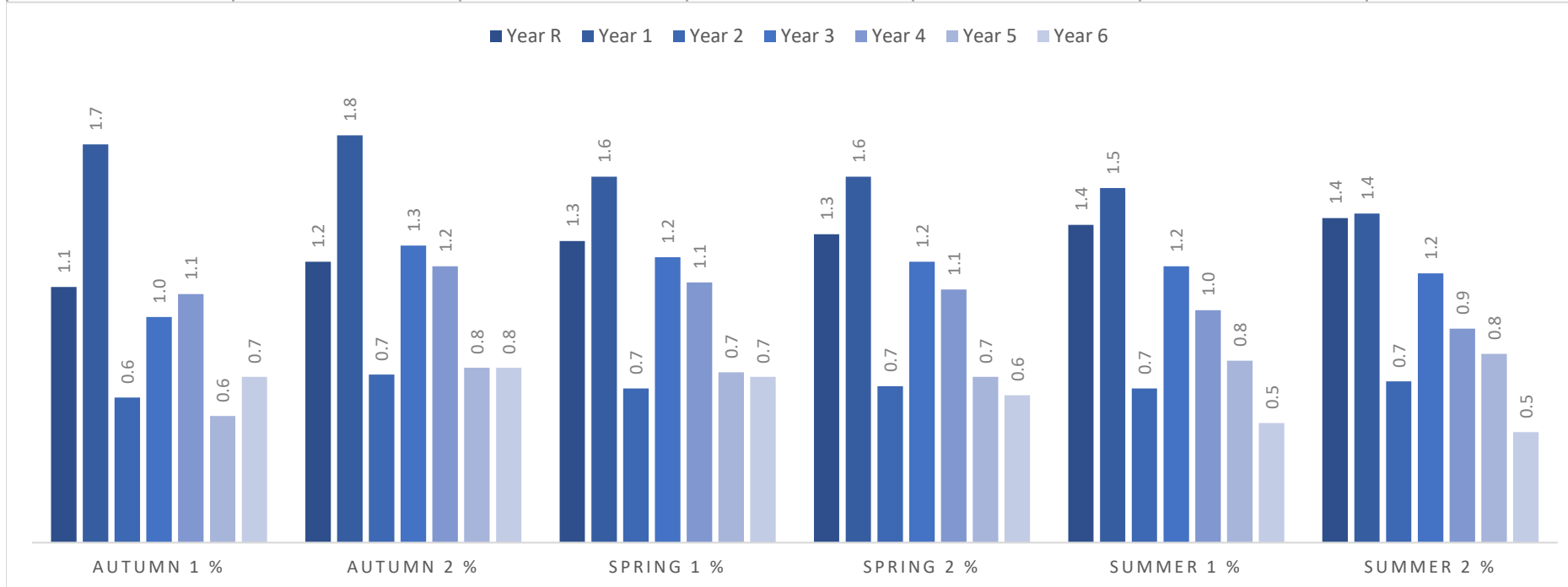
Term → Year ↓	Autumn 1 %	Autumn 2 %	Spring 1 %	Spring 2 %	Summer 1 %	Summer 2 %
Year R	95.8	94.5	94.8	93.5	93.6	93.2
Year 1	93.3	92.9	92.7	92.0	92.2	92.2
Year 2	97.1	95.9	95.7	94.8	94.8	94.8
Year 3	96.5	95.9	95.6	95.3	94.9	94.7
Year 4	92.9	92.8	92.6	92.1	92.2	92.4
Year 5	96.0	94.9	95.0	94.6	94.4	94.3
Year 6	95.0	95.1	95.1	94.4	94.6	94.7
All	95.2	94.7	94.5	93.8	93.8	93.7
1-6	95.1	94.5	94.4	93.8	93.8	93.8



Loxdale Primary School

Annual Attendance Comparison - Lates

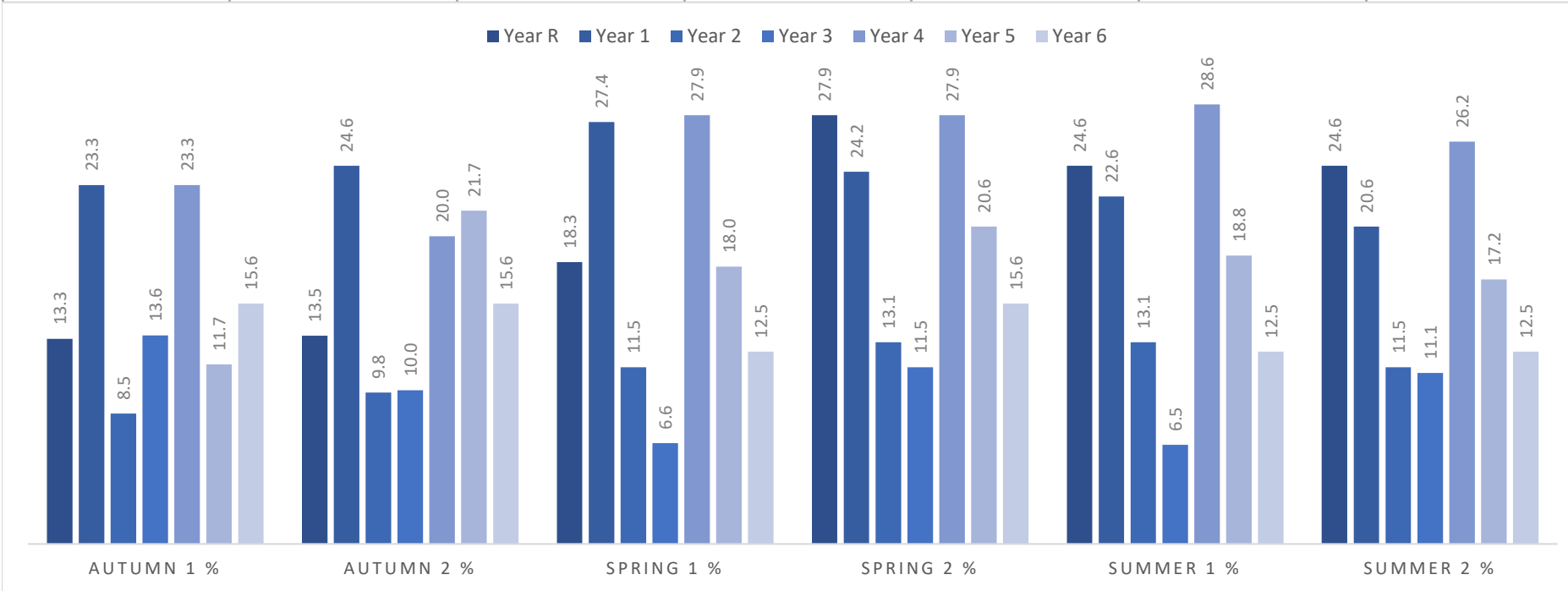
Term → Year ↓	Autumn 1 %	Autumn 2 %	Spring 1 %	Spring 2 %	Summer 1 %	Summer 2 %
Year R	1.1	1.2	1.3	1.3	1.4	1.4
Year 1	1.7	1.8	1.6	1.6	1.5	1.4
Year 2	0.6	0.7	0.7	0.7	0.7	0.7
Year 3	1.0	1.3	1.2	1.2	1.2	1.2
Year 4	1.1	1.2	1.1	1.1	1.0	0.9
Year 5	0.6	0.8	0.7	0.7	0.8	0.8
Year 6	0.7	0.8	0.7	0.6	0.5	0.5



Loxdale Primary School

Annual Attendance Comparison - Attendance <90%

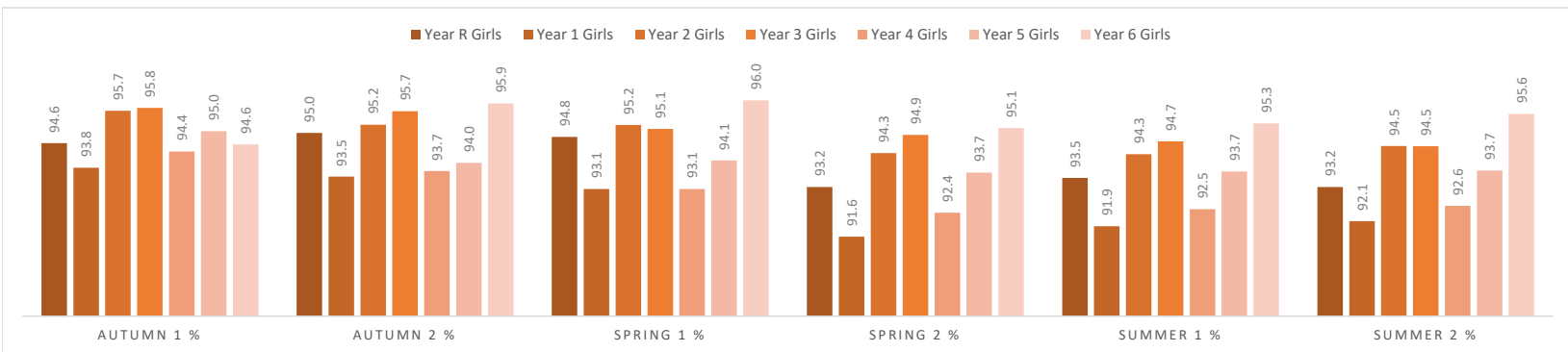
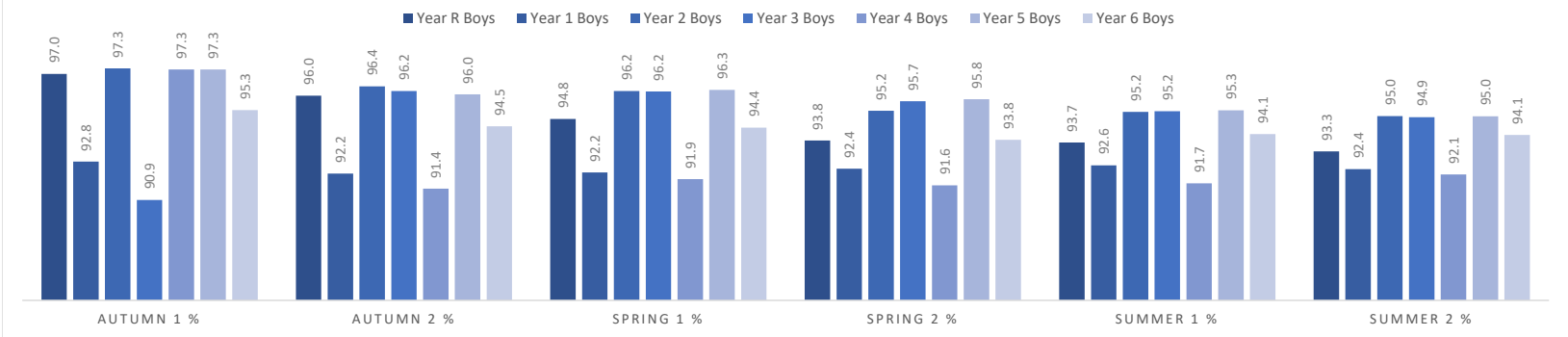
Term → Year ↓	Autumn 1 %	Autumn 2 %	Spring 1 %	Spring 2 %	Summer 1 %	Summer 2 %
Year R	13.3	13.5	18.3	27.9	24.6	24.6
Year 1	23.3	24.6	27.4	24.2	22.6	20.6
Year 2	8.5	9.8	11.5	13.1	13.1	11.5
Year 3	13.6	10.0	6.6	11.5	6.5	11.1
Year 4	23.3	20.0	27.9	27.9	28.6	26.2
Year 5	11.7	21.7	18.0	20.6	18.8	17.2
Year 6	15.6	15.6	12.5	15.6	12.5	12.5



Loxdale Primary School

Annual Attendance Comparison - Gender

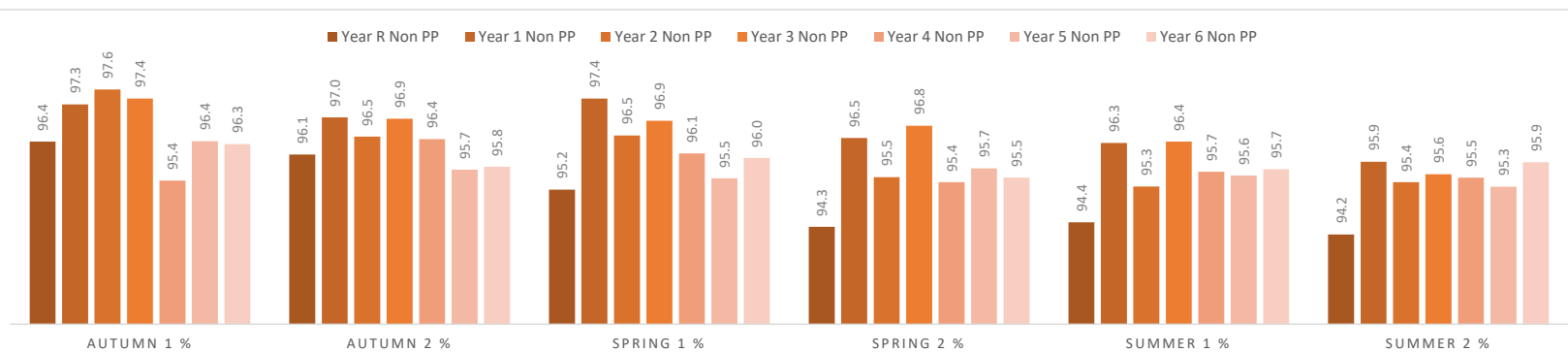
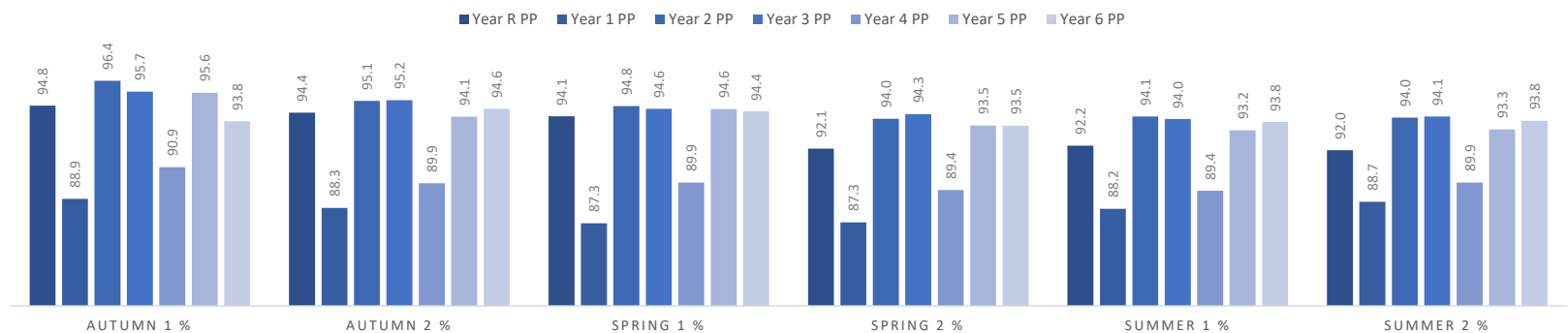
Term → Year ↓	Autumn 1 %	Autumn 2 %	Spring 1 %	Spring 2 %	Summer 1 %	Summer 2 %
Year R Boys	97.0	96.0	94.8	93.8	93.7	93.3
Year R Girls	94.6	95.0	94.8	93.2	93.5	93.2
Year 1 Boys	92.8	92.2	92.2	92.4	92.6	92.4
Year 1 Girls	93.8	93.5	93.1	91.6	91.9	92.1
Year 2 Boys	97.3	96.4	96.2	95.2	95.2	95.0
Year 2 Girls	95.7	95.2	95.2	94.3	94.3	94.5
Year 3 Boys	90.9	96.2	96.2	95.7	95.2	94.9
Year 3 Girls	95.8	95.7	95.1	94.9	94.7	94.5
Year 4 Boys	97.3	91.4	91.9	91.6	91.7	92.1
Year 4 Girls	94.4	93.7	93.1	92.4	92.5	92.6
Year 5 Boys	97.3	96.0	96.3	95.8	95.3	95.0
Year 5 Girls	95.0	94.0	94.1	93.7	93.7	93.7
Year 6 Boys	95.3	94.5	94.4	93.8	94.1	94.1
Year 6 Girls	94.6	95.9	96.0	95.1	95.3	95.6



Loxdale Primary School

Annual Attendance Comparison - Pupil Premium

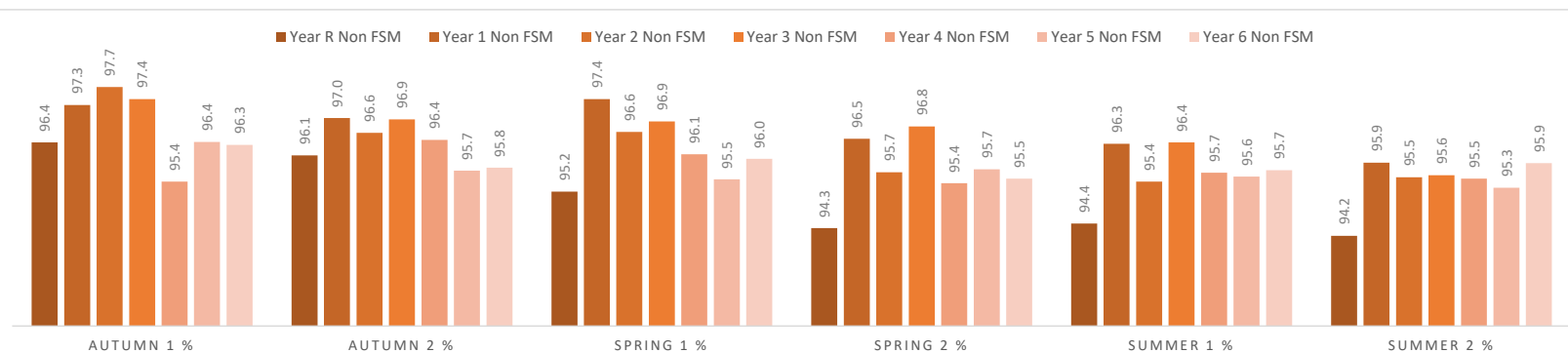
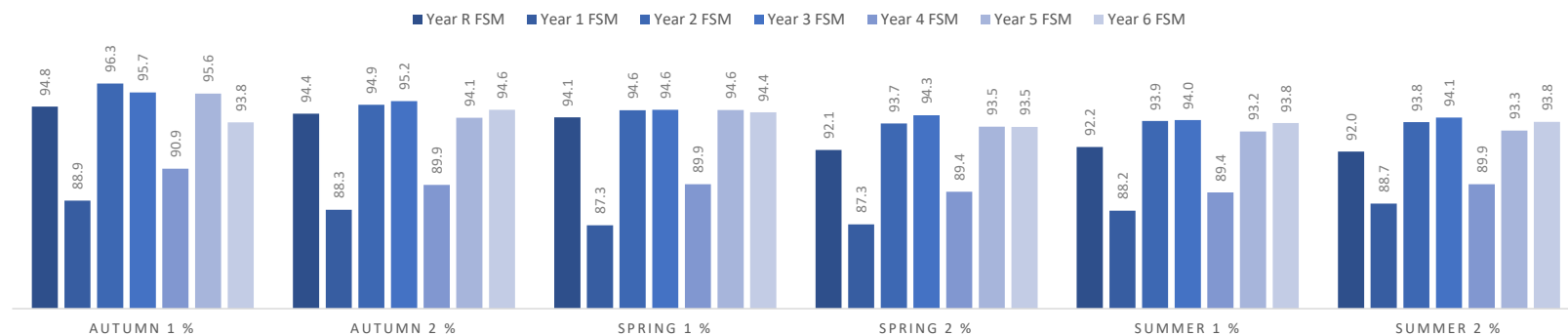
Term → Year ↓	Autumn 1 %	Autumn 2 %	Spring 1 %	Spring 2 %	Summer 1 %	Summer 2 %
Year R PP	94.8	94.4	94.1	92.1	92.2	92.0
Year R Non PP	96.4	96.1	95.2	94.3	94.4	94.2
Year 1 PP	88.9	88.3	87.3	87.3	88.2	88.7
Year 1 Non PP	97.3	97.0	97.4	96.5	96.3	95.9
Year 2 PP	96.4	95.1	94.8	94.0	94.1	94.0
Year 2 Non PP	97.6	96.5	96.5	95.5	95.3	95.4
Year 3 PP	95.7	95.2	94.6	94.3	94.0	94.1
Year 3 Non PP	97.4	96.9	96.9	96.8	96.4	95.6
Year 4 PP	90.9	89.9	89.9	89.4	89.4	89.9
Year 4 Non PP	95.4	96.4	96.1	95.4	95.7	95.5
Year 5 PP	95.6	94.1	94.6	93.5	93.2	93.3
Year 5 Non PP	96.4	95.7	95.5	95.7	95.6	95.3
Year 6 PP	93.8	94.6	94.4	93.5	93.8	93.8
Year 6 Non PP	96.3	95.8	96.0	95.5	95.7	95.9



Loxdale Primary School

Annual Attendance Comparison - Free School Meals

Term → Year ↓	Autumn 1 %	Autumn 2 %	Spring 1 %	Spring 2 %	Summer 1 %	Summer 2 %
Year R FSM	94.8	94.4	94.1	92.1	92.2	92.0
Year R Non FSM	96.4	96.1	95.2	94.3	94.4	94.2
Year 1 FSM	88.9	88.3	87.3	87.3	88.2	88.7
Year 1 Non FSM	97.3	97.0	97.4	96.5	96.3	95.9
Year 2 FSM	96.3	94.9	94.6	93.7	93.9	93.8
Year 2 Non FSM	97.7	96.6	96.6	95.7	95.4	95.5
Year 3 FSM	95.7	95.2	94.6	94.3	94.0	94.1
Year 3 Non FSM	97.4	96.9	96.9	96.8	96.4	95.6
Year 4 FSM	90.9	89.9	89.9	89.4	89.4	89.9
Year 4 Non FSM	95.4	96.4	96.1	95.4	95.7	95.5
Year 5 FSM	95.6	94.1	94.6	93.5	93.2	93.3
Year 5 Non FSM	96.4	95.7	95.5	95.7	95.6	95.3
Year 6 FSM	93.8	94.6	94.4	93.5	93.8	93.8
Year 6 Non FSM	96.3	95.8	96.0	95.5	95.7	95.9



Loxdale Primary School

Annual Attendance Comparison - SEND

Term → Year ↓	Autumn 1 %	Autumn 2 %	Spring 1 %	Spring 2 %	Summer 1 %	Summer 2 %
Year R SEND	97.0	96.5	96.7	95.6	95.4	94.8
Year R Non SEND	95.3	95.0	93.9	92.4	92.7	92.4
Year 1 SEND	89.5	88.7	88.2	88.3	88.3	88.4
Year 1 Non SEND	94.6	94.4	94.3	93.3	93.6	93.6
Year 2 SEND	97.8	96.0	96.2	94.6	94.6	94.7
Year 2 Non SEND	96.8	95.8	95.5	94.9	94.8	94.8
Year 3 SEND	91.4	91.1	90.4	90.4	90.3	90.6
Year 3 Non SEND	97.7	97.1	96.9	96.5	96.1	95.7
Year 4 SEND	88.6	88.8	89.5	88.8	88.2	88.8
Year 4 Non SEND	94.1	94.0	93.6	93.0	93.4	93.5
Year 5 SEND	95.3	91.6	91.6	91.0	90.9	91.2
Year 5 Non SEND	96.2	96.0	96.1	95.7	95.5	95.3
Year 6 SEND	91.0	92.9	93.7	93.5	93.9	94.1
Year 6 Non SEND	95.9	95.6	95.5	94.6	94.8	94.9

