



# Online Safeguarding Policy

Policy Owner	Mr Corns
Date Approved	January 2024
Governor Signature	
Governor Name	
Governor Role	



**THE EDUCATION  
PEOPLE**

<u>Admin use only</u>	
Location	
Website	
Learning Platform	
Policies File	
Staff room	
Headteacher's File	
Policies Log updated	



# Contents

	<b>Page no</b>
<b>Online Safety Policy Content</b>	
1. Policy Aims	p.5
2. Policy Scope	p.5
2.2 Links with other policies and practices	p.6
3. Monitoring and Review	p.6
4. Roles and Responsibilities	p.6
4.1 The leadership and management team	p.7
4.2 The Designated Safeguarding Lead	p.7
4.3 Members of staff	p.8
4.4 Staff who manage the technical environment	p.8
4.5 Learners	p.9
4.6 Parents	p.9
5. Education and Engagement Approaches	p.9
5.1 Education and engagement with learners	p.9
5.2 Vulnerable Learners	p.11
5.3 Training and engagement with staff	p.11
5.4 Awareness and engagement with parents	p.11
6. Reducing Online Risks	p.12
7. Safer Use of Technology	p.12
7.1 Classroom Use	p.12
7.2 Managing Internet Access	p.13
7.3 Filtering and Monitoring	p.13
7.4 Managing Personal Data Online	p.15
7.5 Security and Management of Information Systems	p.15
7.6 Managing the Safety of the Website	p.16
7.7 Publishing Images and Videos Online	p.16
7.8 Managing Email	p.16
7.9 Educational use of Videoconferencing and/or Webcams	p.17
7.10 Management of Learning Platforms	p.18
7.11 Management of Applications (apps) used to Record Learners Progress	p.18
8. Social Media	p.19
8.1 Expectations	p.19
8.2 Staff Personal Use of Social Media	p.20
8.3 Learners Personal Use of Social Media	p.21
8.4 Official Use of Social Media	p.21
9. Mobile Technology: Use of Personal Devices and Mobile Phones	p.22
9.1 Expectations	p.22
9.2 Staff Use of Personal Devices and Mobile Phones	p.23
9.3 Visitors' Use of Personal Devices and Mobile Phones	p.23
9.4 Learners Use of Personal Devices and Mobile Phones	p.24
9.5 Mobile Phone Parental Consent Form	p.26
10. Responding to Online Safety Incidents and Concerns	p.27
10.1 Concerns about learner online behaviour and/or welfare	p.27
10.2 Concerns about staff online behaviour and/or welfare	p.28
10.3 Concerns about parent/carer online behaviour and/or welfare	p.28



11. Procedures for Responding to Specific Online Incidents or Concerns	p.28
11.1 Online Sexual Violence and Sexual Harassment between Children	p.28
11.2 Youth Produced Sexual Imagery or “Sexting”	p.29
11.3 Online abuse and exploitation (including child sexual abuse and sexual or criminal exploitation)	p.31
11.4 Indecent Images of Children (IIOC)	p.32
11.5 Cyberbullying	p.33
11.6 Online Hate	p.33
11.7 Online Radicalisation and Extremism	p.33
Responding to an Online Safety Concern Flowchart	p.34
Useful Links for Educational Settings	p.35



# Loxdale Primary School Online Safety Policy



## Key Details

Designated Safeguarding Lead (s): (**Mrs Patricia Scott, Head Teacher**)  
Named Governor with lead responsibility: (**Mr W Flitcroft**)

Date written: (**January 2024**)

Date agreed and ratified by Governing Board: (**January 2024**)

Date of next review: (**January 2025**)

This policy will be reviewed **at least** annually. It will also be revised following any concerns and/or updates to national and local guidance or procedures.



# Loxdale Primary School Online Safety Policy

## 1. Policy aims

- This online safety policy has been written by Mr Corns, involving staff, learners and parents/carers, building on the Kent County Council/The Education People online safety policy template, with specialist advice and input as required.
- It takes into account the latest DfE statutory guidance '[Keeping Children Safe in Education](#)', [Early Years Foundation Stage](#) and '[Working Together to Safeguard Children \(2023\)](#)' guidance.
- The purpose of Loxdale Primary School's online safety policy is to
  - safeguard and promote the welfare of all members of our school community online.
  - identify approaches to educate and raise awareness of online safety throughout our community.
  - enable all staff to work safely and responsibly, to role model positive behaviour online and to manage professional standards and practice when using technology.
  - identify clear procedures to follow when responding to online safety concerns.
- Loxdale Primary School identifies that the issues classified within online safety are considerable but can be broadly categorised into three areas of risk.
  - **Content:** being exposed to illegal, inappropriate or harmful material
  - **Contact:** being subjected to harmful online interaction with other users
  - **Conduct:** personal online behaviour that increases the likelihood of, or causes, harm.

## 2. Policy scope

- Loxdale Primary School recognises that online safety is an essential part of safeguarding and acknowledges its duty to ensure that all learners and staff are protected from potential harm online.
- Loxdale Primary School identifies that the internet and associated devices, such as computers, tablets, mobile phones and games consoles are an important part of everyday life which present positive and exciting opportunities, as well as challenges and risks.
- Loxdale Primary School will empower our learners to acquire the knowledge needed to use the internet and technology in a safe, considered and respectful way, and develop their resilience so they can manage and respond to online risks.
- This policy applies to all staff, including the Governing Board, leadership team, teachers, support staff, external contractors, visitors, volunteers and other individuals who work for, or provide services on behalf of the setting (collectively referred to as "staff" in this policy) as well as learners and parents and carers.
- This policy applies to all access to the internet and use of technology, including mobile technology, or where learners, staff or other individuals have been provided with setting issued devices for use, both on and off-site.



## 2.2 Links with other policies and practices

- This policy links with several other policies, practices and action plans, including but not limited to:
  - Anti-bullying policy
  - Acceptable Use Policies (AUP) and/or the Code of conduct/staff behaviour policy
  - Behaviour and discipline policy
  - Child protection policy & Safeguarding
  - Confidentiality policy
  - Curriculum policies, such as: Computing, Personal Social and Health Education (PSHE), Citizenship and Relationships and Sex Education (RSE)
  - Data security
  - Cameras and image use policy
  - Mobile phone and social media policies
  - Searching, screening and confiscation policy

## 3. Monitoring and review

- Technology evolves and changes rapidly; as such Loxdale Primary School will review this policy at least annually. The policy will be revised following any national or local policy updates, any local child protection concerns and/or any changes to our technical infrastructure.
- We will regularly monitor internet use and evaluate online safety mechanisms to ensure that this policy is consistently applied.
- To ensure they have oversight of online safety, the Head Teacher will be informed of online safety concerns, as appropriate.
- The named governor for safeguarding will report on online safety practice and incidents, including outcomes, on a regular basis to the wider Governing Board.
- Any issues identified via monitoring policy compliance will be incorporated into our action planning.

## 4. Roles and Responsibilities

- The Designated Safeguarding Lead (DSL) (*Mrs Scott, Head Teacher*) is recognised as holding overall lead responsibility for online safety. **Whilst activities of the DSL may be delegated to an appropriately trained deputy, overall the ultimate lead responsibility for safeguarding and child protection, including online safety remains with them.**
- Loxdale Primary School recognises that all members of the community have important roles and responsibilities to play with regards to online safety.



#### **4.1 The leadership and management team and the 'Online Safety Lead' will:**

- Create a whole setting culture that incorporates online safety throughout all elements of school life.
- Ensure that online safety is viewed as a safeguarding issue and that practice is in line with national and local recommendations and requirements.
- Implement appropriate and up-to-date policies regarding online safety which addresses the acceptable use of technology, peer on peer abuse, use of social media and mobile technology.
- Work with technical staff and IT support to ensure that suitable and appropriate filtering and monitoring systems are in place.
- Support the DSL and any deputies by ensuring they have enough time and resources to carry out their responsibilities.
- Ensure robust reporting channels are in place for the whole community to access regarding online safety concerns.
- Undertake appropriate risk assessments regarding the safe use of technology on site.
- Audit and evaluate online safety practice to identify strengths and areas for improvement.
- Ensure that staff, learners and parents/carers are proactively engaged in activities which promote online safety.
- Support staff to ensure that online safety is embedded within a progressive whole setting curriculum which enables all learners to develop an appropriate understanding of online safety.

#### **4.2 The Designated Safeguarding Lead (DSL) will:**

- Act as a named point of contact within the setting on all online safeguarding issues.
- Liaise with other members of staff, such as support staff, IT technicians, network managers and the SENCO on matters of online safety.
- Ensure appropriate referrals are made to relevant external partner agencies, as appropriate.
- Work alongside deputy DSLs to ensure online safety is recognised as part of the settings safeguarding responsibilities, and that a coordinated whole school approach is implemented.
- Access regular and appropriate training and support to ensure they understand the unique risks associated with online safety and have the relevant and up-to-date knowledge required to keep learners safe online.
- Access regular and appropriate training and support to ensure they recognise the additional risks that learners with SEN and disabilities (SEND) face online.
- Ensure all members of staff receive regular, up-to-date and appropriate online safety training and information as part of their induction and child protection training.
- Keep up-to-date with current research, legislation and trends regarding online safety and communicate this with the community, as appropriate.
- Work with staff to coordinate participation in local and national events to promote positive online behaviour, such as Safer Internet Day.
- Ensure that online safety is promoted to parents, carers and the wider community through a variety of channels and approaches.
- Maintain records of online safety concerns, as well as actions taken, as part of the settings safeguarding recording mechanisms.



- Monitor online safety incidents to identify gaps and trends and use this data to update the education response and school policies and procedures.
- Report online safety concerns, as appropriate, to the school Governing Board.
- Work with the leadership team to review and update online safety policies on a regular basis (at least annually) with stakeholder input.
- Meet regularly (**termly**) with the governor with a lead responsibility for safeguarding and online safety.

#### **4.3 It is the responsibility of all members of staff to:**

- Contribute to the development of our online safety policies.
- Read and adhere to our online safety policy and acceptable use of technology policies.
- Take responsibility for the security of IT systems and the electronic data they use or have access to.
- Model good practice when using technology with learners.
- Maintain a professional level of conduct in their personal use of technology, both on and off site.
- Embed online safety education in curriculum delivery wherever possible.
- Have an awareness of a range of online safety issues and how they may be experienced by the learners in their care.
- Identify online safety concerns and take appropriate action by following the school safeguarding policies and procedures.
- Know when and how to escalate online safety issues, including reporting to the DSL and signposting learners and parents/carers to appropriate support, internally and externally.
- Take personal responsibility for professional development in this area.

#### **4.4 It is the responsibility of staff managing the technical environment to:**

- Provide technical support and perspective to the DSL and school leadership team, especially in the development and implementation of appropriate online safety policies and procedures.
- Implement appropriate security measures, as directed by the leadership team to ensure that the settings IT infrastructure is secure and not open to misuse or malicious attack, whilst allowing learning opportunities to be maximised.
- Ensure that our filtering policy and monitoring systems and approaches are applied and updated on a regular basis; responsibility for its implementation is shared with the leadership team.
- Ensure appropriate technical support and access to our filtering and monitoring systems is given to the DSL and/or deputies to enable them to take appropriate safeguarding action when required.

#### **4.5 It is the responsibility of learners (at a level that is appropriate to their individual age and ability) to:**

- Engage in age/ability appropriate online safety education.
- Contribute to the development of online safety policies.
- Read and adhere to the acceptable use of technology and behaviour policies.





- Respect the feelings and rights of others, on and offline.
- Take an appropriate level of responsibility for keeping themselves and others safe online.
- Seek help from a trusted adult, if they are concerned about anything, they or others experience online.

#### **4.6 It is the responsibility of parents and carers to:**

- Read our acceptable use of technology policies and encourage their children to adhere to them.
- Support our online safety approaches by discussing online safety issues with their children and reinforcing appropriate and safe online behaviours at home.
- Role model safe and appropriate use of technology and social media and abide by the home-school agreement and acceptable use of technology policies.
- Seek help and support from the school or other appropriate agencies, if they or their child encounter online issues.
- Contribute to the development of our online safety policies.
- Use our systems, such as class websites and other IT resources, safely and appropriately.
- Take responsibility for their own awareness in relation to the risks and opportunities posed by the new and emerging technologies that their children access and use at home.

## **5. Education and engagement approaches**

### **5.1 Education and engagement with learners**

- The setting will establish and embed a whole school culture and will raise awareness and promote safe and responsible internet use amongst learners by:
  - ensuring our curriculum and whole school approach is developed in line with the UK Council for Internet Safety (UKCIS) '[Education for a Connected World Framework](#)' and DfE '[Teaching online safety in school](#)' guidance.
  - ensuring online safety is addressed in Relationships Education, Relationships and Sex Education, Health Education, Citizenship and Computing programmes of study.
  - reinforcing online safety principles in other curriculum subjects as appropriate, and whenever technology or the internet is used on site.
  - implementing appropriate peer education approaches, such as setting up and supporting the development of school 'Digital Ambassadors', who work to raise awareness of online safety issues and to promote positive online behaviours.
  - creating a safe environment in which all learners feel comfortable to say what they feel, without fear of getting into trouble and/or being judged for talking about something which happened to them online.
  - involving the DSL (or a deputy) as part of planning for online safety lessons or activities, so they can advise on any known safeguarding cases, and ensure support is in place for any learners who may be impacted by the content.
  - making informed decisions to ensure that any educational resources used are appropriate for our learners.



- using external visitors, where appropriate, to complement and support our internal online safety education approaches.
  - providing online safety education as part of the transition programme across the key stages and/or when moving between establishments.
  - rewarding positive use of technology.
- Loxdale Primary School will support learners to understand and follow our acceptable use policies in a way which suits their age and ability by:
    - displaying acceptable use posters in all rooms with internet access.
    - informing learners that network and internet use will be monitored for safety and security purposes, and in accordance with legislation.
    - seeking learner voice when writing and developing online safety policies and practices, including curriculum development and implementation.
- Loxdale Primary School will ensure learners develop the underpinning knowledge and behaviours needed to navigate the online world safely, in a way which suits their age and ability by:
    - ensuring age- appropriate education regarding safe and responsible use precedes internet access.
    - teaching learners to evaluate what they see online and recognise techniques used for persuasion, so they can make effective judgements about if what they see is true, valid or acceptable.
    - educating them in the effective use of the internet to research, including the skills of knowledge location, retrieval and evaluation.
    - enabling them to understand what acceptable and unacceptable online behaviour looks like.
    - preparing them to identify possible online risks and make informed decisions about how to act and respond.
    - ensuring they know how and when to seek support if they are concerned or upset by something they see or experience online.

## 5.2 Vulnerable Learners

- Loxdale Primary School recognises that any learner can be vulnerable online, and vulnerability can fluctuate depending on their age, developmental stage and personal circumstances. However, there are some learners, for example looked after children and those with special educational needs, who may be more susceptible or may have less support in staying safe online.
- Loxdale Primary School will ensure that differentiated and appropriate online safety education, access and support is provided to vulnerable learners, teaching key 'Online Safety skills taken from the 'Education for a Connected World' document.



- Staff at Loxdale Primary School will seek input from specialist staff as appropriate, including the DSL, SENCO, Children and Young People in Care Designated Teacher to ensure that the policy and curriculum is appropriate to our community's needs.

### **5.3 Training and engagement with staff**

- We will
  - provide and discuss the online safety policy and procedures with all members of staff as part of induction.
  - provide up-to-date and appropriate online safety training and annual safeguarding and child protection training for all staff which is integrated, aligned and considered as part of our overarching safeguarding approach.
  - ensure that staff training covers the potential risks posed to learners (content, contact and conduct) as well as our professional practice expectations.
  - build on existing expertise by provide opportunities for staff to contribute to and shape our online safety approaches, including curriculum, policies and procedures.
  - make staff aware that our IT systems are monitored, and that activity can be traced to individual users. Staff will be reminded to behave professionally and in accordance with our policies when accessing our systems and devices.
  - make staff aware that their online conduct, including personal use of social media, can have an impact on their professional role and reputation.
  - highlight useful educational resources and tools which staff could use with learners.
  - ensure all members of staff are aware of the procedures to follow regarding online safety concerns involving learners, colleagues or other members of the community.

### **5.4 Awareness and engagement with parents and carers**

- Loxdale Primary School recognises that parents and carers have an essential role to play in enabling children and young people to become safe and responsible users of the internet and associated technologies.
- We will build a partnership approach to online safety with parents and carers by:
  - providing information and guidance on online safety in a variety of formats, such as during 'Parents' Evenings' and 'Online Safety Parents Workshops'.
  - drawing their attention to our online safety policy and expectations in our newsletters and other external communication (such as letters and social media channels) as well as in our prospectus and on our website.
  - requesting parents and carers read online safety information as part of joining our community, for example, within our home school agreement.
  - requiring them to read our acceptable use policies and discuss the implications with their children.

## **6. Reducing Online Risks**

- Loxdale Primary School recognises that the internet is a constantly changing environment with new apps, devices, websites and material emerging at a rapid pace.



- We will:
  - regularly review the methods used to identify, assess and minimise online risks.
  - examine emerging technologies for educational benefit and undertake appropriate risk assessments before their use in the school is permitted.
  - ensure that appropriate filtering and monitoring is in place and take all reasonable precautions to ensure that access is appropriate.
  - recognise that due to the global and connected nature of the internet, it is not possible to guarantee that unsuitable material cannot be accessed via our systems or devices and as such identify clear procedures to follow content, comments, images or videos which could cause harm, distress or offence. This is clearly outlined in our acceptable use of technology policies and highlighted through a variety of education and training approaches if breaches or concerns arise.
- All members of the community are made aware of our expectations regarding safe and appropriate behaviour online and the importance of not posting any.

## 7. Safer Use of Technology

### 7.1 Classroom use

- Loxdale Primary School uses a wide range of technology. This includes access to:
  - Computers, laptops, tablets and other digital devices
  - Internet, which may include search engines and educational websites
  - Email
  - Games consoles and other games-based technologies
  - Digital cameras, web cams and video cameras
- All setting owned devices will be used in accordance with our acceptable use of technology policies and with appropriate safety and security measures in place.
- Members of staff will always evaluate websites, tools and apps fully before use in the classroom or recommending for use at home.
- The setting will use appropriate search tools as identified following an informed risk assessment.
- We will ensure that the use of internet-derived materials, by staff and learners complies with copyright law and acknowledge the source of information.
- Supervision of internet access and technology use will be appropriate to a learners age and ability.
  - **Early Years Foundation Stage and Key Stage 1**
    - Access to the internet will be by adult demonstration, with occasional directly supervised access to specific and approved online materials, which supports the learning outcomes planned for the learner's age and ability.
  - **Key Stage 2**
    - Learners will use age-appropriate search engines and online tools.
    - Learners will be directed by the teacher to online materials and resources which support the learning outcomes planned for the learner's age and ability.



## 7.2 Managing internet access

- We will maintain a written record of users who are granted access to our devices and systems.
- All staff, learners and visitors will read and agree an acceptable use policy before being given access to our computer system, IT resources or the internet.

## 7.3 Filtering and monitoring

- Loxdale Primary School uses Lightspeed to block access to sites which could promote or include harmful and/or inappropriate behaviour or material.
- Loxdale Primary also uses Senso to monitor appropriate use of technology within school. Any concerns will alert the DSL Mrs Scott (or in her absence Mr Brookes – SBM and DDSL), who will then investigate the matter further and take the appropriate action in accordance with the latest '[Keeping Children Safe in Education](#)', '[Early Years Foundation Stage](#)' and '[Working Together to Safeguard Children \(2023\)](#)' guidance. This will then be reported to the school Governing Board.

### 7.3.1 Decision making

- Loxdale Primary School governors and leaders have ensured that our school has age and ability appropriate filtering and monitoring in place to limit learner's exposure to online risks.
- Our decision regarding filtering and monitoring has been informed by a risk assessment, considering our specific needs and circumstances.
- Changes to the filtering and monitoring approach will be risk assessed by staff with educational and technical experience and, where appropriate, with consent from the leadership team; all changes to the filtering policy are logged and recorded.
- The leadership team will ensure that regular checks are made to ensure that the filtering and monitoring methods are effective and appropriate.
- The governors and leaders are mindful to ensure that "over blocking" does not unreasonably restrict access to educational activities and safeguarding materials.
- All members of staff are aware that they cannot rely on filtering and monitoring alone to safeguard learners; effective classroom management and regular education about safe and responsible use is essential.

### 7.3.2 Appropriate filtering

- Loxdale Primary School's education broadband connectivity is provided through Virgin Media / ICTS City of Wolverhampton Council.
- Loxdale Primary School uses Lightspeed
- Lightspeed blocks access to sites which could promote or include harmful and/or inappropriate behaviour or material. This includes content which promotes discrimination or extremism, drugs/substance misuse, malware/hacking, gambling, piracy and copyright theft, pro-self-harm, eating disorder and/or suicide content, pornographic content and violent material.
- Lightspeed is a member of Internet Watch Foundation (IWF) and blocks access to illegal Child Abuse Images and Content (CAIC).



- Lightspeed integrates the 'the police assessed list of unlawful terrorist content, produced on behalf of the Home Office'
- We work with Virgin media, ICTS City of Wolverhampton Council and Lightspeed to ensure that our filtering policy is continually reviewed to reflect our needs and requirements. If learners or staff discover unsuitable sites or material, they are required to turn off the screen and report the concern immediately to a member of staff who will deal with the concern appropriately.
- Filtering breaches will be reported to the DSL (or deputy) and technical staff and will be recorded and escalated as appropriate.
- Parents/carers will be informed of filtering breaches involving learners.
- Any access to material believed to be illegal will be reported immediately to the appropriate agencies, such as the IWF, the police and/or CEOP.

### 7.3.3 Appropriate monitoring

- We will appropriately monitor internet use on all setting owned or provided internet enabled devices. This is achieved by:
  - Supervising the learners whilst they are using the internet
  - Monitoring internet and web access carefully
- All users will be informed that use of our systems can be monitored and that all monitoring will be in line with data protection, human rights and privacy legislation.
- If a concern is identified via monitoring approaches we will:
  - Report the concern to the DSL, Mrs Scott, who will respond in line with the child protection policy.
  - If the concern is regarding a member of staff, the DSL will investigate and take appropriate action and report this to the school's Governing Board. If the concern relates to the Headteacher, this will be reported to the Chair of Governors and/ or the LADO.

## 7.4 Managing personal data online

- Personal data will be recorded, processed, transferred and made available online in accordance with General Data Protection Regulations and Data Protection legislation.
  - Full information can be found in our information security policy which can be accessed on our school website.

## 7.5 Security and management of information systems

- We take appropriate steps to ensure the security of our information systems, including:
  - Virus protection being updated regularly.
  - Encryption for personal data sent over the Internet or taken off site (such as via portable media storage) or access via appropriate secure remote access systems.
  - Not using portable media without specific permission; portable media will be checked by an anti-virus /malware scan before use.
  - Not downloading unapproved software to work devices or opening unfamiliar email attachments.
  - Preventing, as far as possible, access to websites or tools which could compromise our systems, including anonymous browsing and other filtering bypass tools.



- Checking files held on our network, as required and when deemed necessary by leadership staff.
- The appropriate use of user logins and passwords to access our network.
- Specific user logins and passwords will be enforced for all users.
- All users are expected to log off or lock their screens/devices if systems are unattended.

### **7.5.1 Password policy**

- All members of staff have their own unique username and private passwords to access our systems; members of staff are responsible for keeping their password private.
- From Reception, all learners are provided with their own unique username and private passwords to access our systems; learners are responsible for keeping their password private.
- We require all users to
  - use strong passwords for access into our system.
  - not share passwords or login information with others or leave passwords/login details where others can find them.
  - not to login as another user at any time.
  - lock access to devices/systems when not in use.

### **7.6 Managing the safety of our website**

- We will ensure that information posted on our website meets the requirements as identified by the DfE.
- We will ensure that our website complies with guidelines for publications including accessibility, data protection, respect for intellectual property rights, privacy policies and copyright.
- Staff or learner's personal information will not be published on our website; the contact details on the website will be our setting address, email and telephone number.
- The administrator account for our website will be secured with an appropriately strong password.
- We will post appropriate information about safeguarding, including online safety, on our website for members of the community.

### **7.7 Publishing images and videos online**

- We will ensure that all images and videos shared online are used in accordance with the associated policies, including (but not limited to) the cameras and image use, data security, acceptable use policies, codes of conduct/behaviour, social media and use of personal devices and mobile phones policies.

### **7.8 Managing email**

- Access to our email systems will always take place in accordance with data protection legislation and in line with other policies, including confidentiality, acceptable use of technology policies and the code of conduct/behaviour policy.
- The forwarding of any chain messages/emails is not permitted.
- Spam or junk mail will be blocked and reported to the email provider.



- Any electronic communication which contains sensitive or personal information will only be sent using secure and encrypted email. Staff should only use recognised school email systems in relation to work.
- Setting email addresses and other official contact details will not be used to set up personal social media accounts.
- Members of the community will immediately tell Mrs P Scott, (DSL) if they receive offensive communication, and this will be recorded in our safeguarding files/records.
- Excessive social email use can interfere with teaching and learning and will be restricted; access to external personal email accounts may be blocked on site.
- We will have a dedicated email for reporting wellbeing and pastoral issues. This inbox will be managed by designated and trained staff.

### **7.8.1 Staff email**

- All members of staff are provided with an email address to use for all official communication; the use of personal email addresses by staff for any official business is not permitted.
- Members of staff are encouraged to have an appropriate work life balance when responding to email, especially if communication is taking place between staff, learners and parents.

### **7.8.2 Learner email**

- Learners will use a provided email account for educational purposes.
- Learners will agree an acceptable use policy and will receive education regarding safe and appropriate email etiquette before access is permitted.

## **7.9 Educational use of videoconferencing and/or webcams**

- Loxdale Primary School recognise that videoconferencing and/or use of webcams can be a challenging activity but brings a wide range of learning benefits.
  - All videoconferencing and/or webcam equipment will be switched off when not in use and will not be set to auto-answer.
  - Video conferencing equipment connected to the educational broadband network will use the national E.164 numbering system and display their H.323 ID name; external IP addresses will not be made available to other sites.
  - Videoconferencing contact details will not be posted publicly.
  - Videoconferencing equipment will not be taken off the premises without prior permission from the DSL/Head Teacher.
  - Staff will ensure that external videoconferencing opportunities and/or tools are suitably risk assessed and will ensure that accounts and systems used to access these events are safe and secure.
  - Video conferencing equipment and webcams will be kept securely and, if necessary, locked away or disabled when not in use.





### 7.9.1 Users

- Parents/carers consent will be obtained prior to learners taking part in videoconferencing activities.
- Learners will ask permission from a member of staff before making or answering a videoconference call or message.
- Videoconferencing will be supervised appropriately, according to the learners age and ability.
- Video conferencing will take place via official and approved communication channels following a robust risk assessment.
- The unique log on and password details for the videoconferencing services will only be issued to members of staff and should be kept securely, to prevent unauthorised access.

### 7.9.2 Content

- When recording a videoconference lesson, it should be made clear to all parties at the start of the conference and written permission will be obtained from all participants; the reason for the recording must be given and recorded material will be stored securely.
- If third party materials are included, we will check that recording is permitted to avoid infringing the third-party intellectual property rights.
- We will establish dialogue with other conference participants before taking part in a videoconference; if it is a non-educational site, staff will check that the material they are delivering is appropriate for the learners.

## 7.10 Management of learning platforms

- Loxdale Primary School uses CloudW as its official learning platform.
- Leaders and staff will regularly monitor the usage of the Learning Platform (LP), including message/communication tools and publishing facilities.
- Only current members of staff, learners and parents will have access to the LP.
- When staff and/or learners leave the setting, their account will be disabled or transferred to their new establishment.
- Learners and staff will be advised about acceptable conduct and use when using the LP.
- All users will be mindful of copyright and will only upload appropriate content onto the LP.
- Any concerns about content on the LP will be recorded and dealt with in the following ways:
  - The user will be asked to remove any material deemed to be inappropriate or offensive.
  - If the user does not comply, the material will be removed by the site administrator.
  - Access to the LP for the user may be suspended.
  - The user will need to discuss the issues with a member of leadership before reinstatement.
  - A learner's parents/carers may be informed.
  - If the content is illegal, we will respond in line with existing child protection procedures.
- Learners may require editorial approval from a member of staff. This may be given to the learner to fulfil a specific aim and may have a limited time frame.
- A visitor may be invited onto the LP by a member of the leadership as part of an agreed focus or a limited time slot.



## 7.11 Management of applications (apps) used to record children's progress

- We use Tapestry to track learners' progress and share appropriate information with parents and carers.
- The Head Teacher will ensure that the use of tracking systems is appropriately risk assessed prior to use, and that use takes place in accordance with data protection legislation, including the General Data Protection Regulations (GDPR) and Data Protection legislation.
- To safeguard learner's data
  - only learner issued devices will be used for apps that record and store learners' personal details, attainment or photographs.
  - personal staff mobile phones or devices will not be used to access or upload content to any apps which record and store learners' personal details, attainment or images.
  - devices will be appropriately encrypted if taken off site, to reduce the risk of a data security breach, in the event of loss or theft.
  - all users will be advised regarding safety measures, such as using strong passwords and logging out of systems.
  - parents and carers will be informed of the expectations regarding safe and appropriate use, prior to being given access; for example, not sharing passwords or images.

## 8. Social Media

### 8.1 Expectations

- The expectations' regarding safe and responsible use of social media applies to all members of the Loxdale Primary School community.
- The term social media may include (but is not limited to) blogs, wikis, social networking sites, forums, bulletin boards, online gaming, apps, video/photo sharing sites, chatrooms and instant messenger.
- All members of the Loxdale Primary School community are expected to engage in social media in a positive and responsible manner.
  - All members of the Loxdale Primary School community are advised not to post or share content that may be considered threatening, hurtful or defamatory to others on any social media service.
- We will control learner and staff access to social media whilst using school provided devices and systems on site.
  - The use of social media during school hours for personal use is permitted for staff. However, it is expected that staff will not post anything on social media sites during these hours.
  - The use of social media during school hours for personal use is not permitted for learners.
  - Inappropriate or excessive use of social media during school hours or whilst using school devices may result in removal of internet access and/or disciplinary or legal action.



- Concerns regarding the online conduct of any member of the Loxdale Primary School community on social media, will be reported to the DSL and be managed in accordance with our anti-bullying, allegations against staff, behaviour and child protection policies.

## **8.2 Staff personal use of social media**

- The safe and responsible use of social media sites will be discussed with all members of staff as part of staff induction and will be revisited and communicated via regular staff training opportunities.
- Safe and professional behaviour will be outlined for all members of staff, including volunteers, as part of our code of conduct/behaviour policy and/or acceptable use of technology policy.

### **8.2.1 Reputation**

- All members of staff are advised that their online conduct on social media can have an impact on their role and reputation within the school.
  - Civil, legal or disciplinary action may be taken if staff are found to bring the profession or institution into disrepute, or if something is felt to have undermined confidence in their professional abilities.
- All members of staff are advised to safeguard themselves and their privacy when using social media services. Advice will be provided to staff via staff training and by sharing appropriate guidance and resources on a regular basis. This will include, but is not limited to:
  - Setting appropriate privacy levels on their personal accounts/sites.
  - Being aware of the implications of using location sharing services.
  - Opting out of public listings on social networking sites.
  - Logging out of accounts after use.
  - Using strong passwords.
  - Ensuring staff do not represent their personal views as being that of the setting.
- Members of staff are encouraged not to identify themselves as employees of Loxdale Primary School on their personal social networking accounts; this is to prevent information being linked with the setting and to safeguard the privacy of staff members.
- All members of staff are encouraged to carefully consider the information, including text and images, they share and post online. Staff are expected to ensure that their social media use is compatible with their professional role and is in accordance our policies, and the wider professional and legal framework.
- Information and content that staff members have access to as part of their employment, including photos and personal information about learners and their family members or colleagues, will not be shared or discussed on social media sites.
- Members of staff will notify the leadership team immediately if they consider that any content shared on social media sites conflicts with their role.

### **8.2.2 Communicating with learners and parents/carers**

- Staff will not use personal social media accounts to contact learners or parents/carers, nor should any contact be accepted.



- All members of staff are advised not to communicate with or add any current or past learners or their family members, as 'friends' on any personal social media sites, applications or profiles.
- Any pre-existing relationships or exceptions which compromise this requirement will be discussed with the DSL/Head Teacher.
  - Decisions made and advice provided in these situations will be formally recorded in order to safeguard learners, the setting and members of staff.
- If ongoing contact with learners is required once they have left the setting, members of staff will be expected to use existing alumni networks, or use official setting provided communication tools.
- Any communication from learners and parents received on personal social media accounts will be reported to the DSL/Head Teacher.

### 8.3 Learners use of social media

- Safe and appropriate use of social media will be taught to learners as part of an embedded and progressive education approach via age appropriate sites and resources.
- We are aware that many popular social media sites are not permitted for use by children under the age of 13, or in some cases higher. As such, we will not create accounts for learners under the required age as outlined in the services terms and conditions.
- Any concerns regarding learners' use of social media will be dealt with in accordance with existing policies, including anti-bullying and behaviour.
- Concerns regarding learners' use of social media will be shared with parents/carers as appropriate, particularly when concerning underage use of social media services and games.
- Learners will be advised:
  - to consider the benefits and risks of sharing personal details or information on social media sites which could identify them and/or their location.
  - to only approve and invite known friends on social media sites and to deny access to others by making profiles private.
  - not to meet any online friends without a parent/carer or other appropriate adults' permission, and to only do so when a trusted adult is present.
  - to use safe passwords.
  - to use social media sites which are appropriate for their age and abilities.
  - how to block and report unwanted communications.
  - how to report concerns on social media, both within the setting and externally.

### 8.4 Official use of social media

- Loxdale Primary School official social media channels are:
  - [@Loxdale\\_Primary; https://www.facebook.com/LoxdalePrimarySchool/](https://www.facebook.com/LoxdalePrimarySchool/)
- The official use of social media sites by Loxdale Primary School only takes place with clear educational or community engagement objectives and with specific intended outcomes.
  - The official use of social media as a communication tool has been formally risk assessed and approved by the Head Teacher.



- Leadership staff have access to account information and login details for our social media channels, in case of emergency, such as staff absence.
- Official social media channels have been set up as distinct and dedicated accounts for official educational or engagement purposes only.
  - Staff use setting provided email addresses to register for and manage official social media channels.
  - Official social media sites are suitably protected and, where possible, run and/or linked to/from our website.
  - Public communications on behalf of the setting will, where appropriate and possible, be read and agreed by at least one other colleague.
- Official social media use will be conducted in line with existing policies, including but not limited to anti-bullying, image/camera use, data protection, confidentiality and child protection.
- All communication on official social media platforms by staff on behalf of the setting will be clear, transparent and open to scrutiny.
- Parents/carers and learners will be informed of any official social media use, along with expectations for safe use and action taken to safeguard the community.
  - Only social media tools which have been risk assessed and approved as suitable for educational purposes will be used.
  - Any official social media activity involving learners will be moderated if possible.
- Parents and carers will be informed of any official social media use with learners; written parental consent will be obtained, as required.
- We will ensure that any official social media use does not exclude members of the community who are unable or unwilling to use social media channels.

#### **8.4.1 Staff expectations**

- Members of staff who follow and/or like our official social media channels will be advised to use dedicated professional accounts where possible, to avoid blurring professional boundaries.
- If members of staff are participating in online social media activity as part of their capacity as an employee of the setting, they will:
  - Sign our social media acceptable use policy.
  - Be aware they are an ambassador for the setting.
  - Be professional, responsible, credible, fair and honest, and consider how the information being published could be perceived or shared.
  - Always act within the legal frameworks they would adhere to within the workplace, including libel, defamation, confidentiality, copyright, data protection and equalities laws.
  - Ensure appropriate consent has been given before sharing images on the official social media channel.
  - Not disclose information, make commitments or engage in activities on behalf of the setting, unless they are authorised to do so.
  - Not engage with any private/direct messaging with current or past learners or parents/carers.
  - Inform their line manager, the DSL/Head Teacher of any concerns, such as criticism, inappropriate content or contact from learners.



## 9. Mobile Technology: Use of Personal Devices and Mobile Phones

- Loxdale Primary School recognises that personal communication through mobile technologies is part of everyday life for many learners, staff and parents/carers. Mobile technology needs to be used safely and appropriately within the setting.

### 9.1 Expectations

- All use of mobile technology including mobile phones and personal devices such as tablets, games consoles and wearable technology will take place in accordance with our policies, such as anti-bullying, behaviour and child protection and with the law.
- Electronic devices of any kind that are brought onto site are the responsibility of the user.
  - All members of the Loxdale Primary School community are advised to take steps to protect their mobile phones or personal devices from loss, theft or damage; we accept no responsibility for the loss, theft or damage of such items on our premises.
  - All members of the Loxdale Primary School community are advised to use passwords/pin numbers to ensure that unauthorised calls or actions cannot be made on their phones or devices; passwords and pin numbers should be kept confidential and mobile phones and personal devices should not be shared.
- Mobile phones and personal devices are not permitted to be used in specific areas within the site such as the toilets.
- The sending of abusive or inappropriate messages or content via mobile phones or personal devices is forbidden by any member of the community; any breaches will be dealt with in line with our anti-bullying and behaviour policies.
- All members of the Loxdale Primary School community are advised to ensure that their mobile phones and personal devices do not contain any content which may be offensive, derogatory or would otherwise contravene our behaviour or child protection policies.

### Mobile Devices and Wearable Technology in School

- Loxdale Primary School has a clear policy on the use of all electronic devices with imaging and sharing capabilities in school and this policy makes explicit reference to camera mobile phones, iPads (or tablets) and wearable technology.

#### Electronic Devices with Imaging and Sharing Capabilities

- Camera mobile phones, tablets, wearable technology and other electronic devices with imaging and sharing capabilities are now part of our everyday lives and these enable users to take high resolution pictures. These can often be sent instantly to other devices or email addresses. They can also be posted on the internet or in chat rooms.
- There is a potential for this technology to be misused in schools and can become an instrument of bullying or harassment directed against pupils or/and teachers.



## 9.2 Staff Use of Personal Devices and Mobile Phones

- Staff use of such personal electronic devices that use such technology during the working day should :
  - be outside of their contracted hours.
  - be discreet and appropriate eg: not in the presence of pupils.
  - not be used in toilets.
  - ensure that Bluetooth or airdrop are hidden or disabled.
- Any personal electronic devices using this technology should be switched off/set to silent and left in a safe place during lesson times. Wearable technology can be worn by staff but must be switched to airplane mode. The school cannot take responsibility for items that are lost, damaged or stolen. Staff are strongly advised to ensure they use protective passwords or pin numbers to avoid unauthorised calls or actions from their mobile device.
- Staff should never contact pupils or parents from their personal mobile devices or give their mobile phone number to pupils or parents. If a member of staff needs to make telephone contact with a pupil, they should use the school telephone in the office.
- Staff should never send to, or accept from, colleagues any texts or images that could be viewed as inappropriate, derogatory or abusive and would otherwise contravene our Behaviour or Safeguarding and Child Protection Policy.
- Staff should never send to, or accept from pupils or parents (unless discussed with the Headteacher where staff are personal friends with other parents), any texts or images. With regard to personal mobile devices, a member of staff should never use these to photograph a pupil(s) or allow themselves to be photographed by pupils.
- This guidance should be seen as a safeguard for members of staff, the school and the Local Authority. Staff should understand that failure to comply with the policy is likely to result in the enforcement of the Whistleblowing policy and associated safeguarding procedures, including the involvement of the LADO.

## 9.3 Visitors' Use of Personal Devices and Mobile Phones

Parents, visitors or volunteers in the school building should only use their mobile device within the confines of the School Office or Staff Rooms or other areas as designated by a member of the Senior Leadership Team, dependent upon circumstance.

- Adults either in school or accompanying children on school trips should not use their mobile devices to take pictures of pupils, unless it is at a public event such as Sports Day, performances or the Summer or Christmas Fair and specific information for this will be given at each event.



- If parents who accompany children on a school trip are asked by the teacher to take photos as a record of the educational visit, they will be issued with a school device. Parents accompanying children on school trips should not use their personal mobile devices to take pictures of children.

### **Contractors and Local Authority Employees Policy**

- Contractors and local authority employees must leave their mobile devices in their pocket and ensure they are turned to silent or switched to airplane mode if a wearable device. Devices should only be used if required to take photographs of equipment or buildings or to speak to other colleagues and this must also be done in the presence of a member of staff (or in a private room if making a confidential call e.g. a social worker).

## **9.4 Learners Use of Personal Devices and Mobile Phones**

- Whilst we fully acknowledge a parent's right to allow their child to bring a mobile phone to school if they walk to and from school without adult supervision, **Loxdale Primary School discourages pupils from bringing their mobile phones to school due to the potential issues raised above.** Pupils are not allowed to bring any other mobile devices or wearable technology into school.
- When a child needs to bring a phone into school, a permission slip must be signed by the parent and the phone must be handed to the class teacher at the start of the day to be locked in the classroom desk and collected at the end of the day. Phones should be clearly marked so that each pupil knows their own phone. Parents/ carers are advised that Loxdale Primary School accepts **no liability** for the loss or damage to mobile phones which are brought into school or school grounds.
- Where a pupil is found by a member of staff to be using a mobile phone, the phone will be confiscated from the pupil and handed to the child's class teacher. The mobile phone will be locked in the class desk and the pupil may collect the phone at the end of the school day. A letter will be sent home to parents requesting that a permission slip be returned the next day. If this practice continues more than three times, then the school will confiscate the phone until an appropriate adult collects the phone from a senior member of staff.
- Searches of mobile phones may be carried out in accordance with the DfE 'Searching, Screening and Confiscation' guidance. Pupils' mobile devices may be searched by a member of the Senior Leadership Team with the consent of the parent/ carer and content may be deleted or requested to be deleted if it contravenes school policy.
- If a pupil is found taking photographs or video footage with a mobile phone of either other pupils or teachers, this will be regarded as a serious offence and action will be taken according to our Behaviour Policy. If images of other pupils or teachers have been taken, the phone will not be returned to the pupil until the images have been removed by the pupil in the presence of a





senior member of staff. (Please see more guidance on sexting in our Safeguarding and Child Protection Policy).

- Should a pupil be found to be using their phone inappropriately, the school reserves the right to withdraw this privilege and they will no longer be able to bring a phone into school.
- We ask that parents should talk to their children about the appropriate use of text messages as they can often be used to bully pupils.
- Should parents need to contact pupils or vice versa during the school day, this should be done via the usual school procedure of contacting the school office via phone or email.
- The policy supports the Health & Safety, Anti Bullying, Child Protection and Safeguarding policies.



## 9.5 Mobile Phone Parental Consent Form

### Mobile Phone Parental Consent Form

Dear Parent/Carer,

In accordance with our mobile phone policy, if your child is bringing in a mobile phone to school on a regular basis, please could you sign the form below to give your permission for your child to do this and remind them of our school policy.

Your child needs to hand their phone to the class teacher first thing in the morning as they enter their classroom.

- The school takes no responsibility for the loss or damage to a mobile phone.
- Your child's phone should be appropriately marked so that your child can recognise it.
- Should your child be found using their phone inappropriately, the school reserves the right to withdraw this privilege and they will no longer be able to bring their phone into school.
- Children should NOT be bringing ANY other mobile device into school.

Thank you.

Yours sincerely,

P Scott

Mrs Scott

Head teacher

### MOBILE PHONE PARENTAL CONSENT

I/we give permission for my child (name) .....  
in Year ..... to bring their mobile phone into school.

I/we have read the policy and understand its implications.

Signed .....

Date.....

PLEASE RETURN PERMISSION SLIP TO THE SCHOOL OFFICE. THANK YOU.



## 10. Responding to Online Safety Incidents

- All members of the community will be made aware of the reporting procedure for online safety concerns, including breaches of filtering, peer on peer abuse, including cyberbullying and youth produced sexual imagery (sexting), online sexual violence and harassment, online abuse and exploitation and illegal content.
- All members of the community will respect confidentiality and the need to follow the official procedures for reporting concerns.
  - Learners, parents and staff will be informed of our complaints procedure and staff will be made aware of the whistleblowing procedure.
- We require staff, parents, carers and learners to work in partnership with us to resolve online safety issues.
- After any investigations are completed, leadership staff will debrief, identify lessons learnt and implement any policy or curriculum changes, as required.
- Incidents will be recorded on SIMS and also on CPOMS.
- If we are unsure how to proceed with an incident or concern, the DSL (or deputy) will seek advice from the Education Safeguarding Service.
- Where there is a concern that illegal activity has taken place, we will contact the police using 101, or 999 if there is immediate danger or risk of harm as appropriate.
- If information relating to a specific incident or a concern needs to be shared beyond our community, for example if other local settings are involved or the wider public may be at risk, the DSL/Head Teacher will speak with the police and/or the Education Safeguarding Service first, to ensure that potential criminal or child protection investigations are not compromised.

### 10.1 Concerns about learner online behaviour and/or welfare

- The DSL (or deputy) will be informed of all online safety concerns involving safeguarding or child protection risks in line with our child protection policy.
- All concerns about learners will be recorded in line with our child protection policy using CPOMS.
- Loxdale Primary School recognises that whilst risks can be posed by unknown individuals or adults online, learners can also abuse their peers; all online peer on peer abuse concerns will be responded to in line with our child protection and behaviour policies.
- The DSL (or deputy) will ensure that online safety concerns are escalated and reported to relevant partner agencies in line with local policies and procedures.
- Appropriate sanctions and/or pastoral/welfare support will be offered to learners as appropriate. Civil or legal action will be taken if necessary.
- We will inform parents/carers of online safety incidents or concerns involving their child, as and when required.



## 10.2 Concerns about staff online behaviour and/or welfare

- Any complaint about staff misuse will be referred to the Head Teacher, in accordance with our allegations against staff policy.
- Any allegations regarding a member of staff's online conduct will be discussed with the LADO (Local Authority Designated Officer).
- Appropriate disciplinary, civil and/or legal action will be taken in accordance with our staff behaviour policy/code of conduct.
- Welfare support will be offered to staff as appropriate.

## 10.3 Concerns about parent/carerer online behaviour and/or welfare

- Concerns regarding parents/carers behaviour and/or welfare online will be reported to the Head Teacher/DSL. The Head Teacher/DSL will respond to concerns in line with existing policies, including but not limited to child protection, anti-bullying, complaints, allegations against staff, home-school agreements, acceptable use of technology and behaviour policy.
- Civil or legal action will be taken if necessary.
- Welfare support will be offered to parents/carers as appropriate.

# 11. Procedures for Responding to Specific Online Concerns

## 11.1 Online sexual violence and sexual harassment between children

- Our Head Teacher, DSL and appropriate members of staff have accessed and understood the latest DfE "[Sexual violence and sexual harassment between children in schools and colleges](#)" guidance and part 5 of '[Keeping children safe in education](#)'
  - Full details of our response to child on child abuse including, sexual violence and harassment can be found in our child protection policy.
- Loxdale Primary School recognises that sexual violence and sexual harassment between children can take place online. Examples may include;
  - Non-consensual sharing of sexual images and videos
  - Sexualised online bullying
  - Online coercion and threats
  - 'Upskirting', which typically involves taking a picture under a person's clothing without them knowing, with the intention of obtaining sexual gratification, or causing the victim humiliation, distress or alarm. It is a criminal offence
  - Unwanted sexual comments and messages on social media
  - Online sexual exploitation
- We will respond to concerns regarding online sexual violence and sexual harassment between children, regardless of whether the incident took place on our premises or using our equipment.
- If made aware of any concerns relating to online sexual violence and sexual harassment, we will:



- immediately notify the DSL (or deputy) and act in accordance with our child protection and anti-bullying policies.
  - if content is contained on learners personal devices, they will be managed in accordance with the DfE '[searching screening and confiscation](#)' advice.
  - provide the necessary safeguards and support for all learners involved, such as implementing safety plans, offering advice on blocking, reporting and removing online content, and providing appropriate counselling/pastoral support.
  - implement appropriate sanctions in accordance with our behaviour policy.
  - inform parents and carers, if appropriate, about the incident and how it is being managed.
  - If appropriate, make referrals to partner agencies, such as Children's Social Work Service and/or the police.
  - if the concern involves children and young people at a different educational setting, the DSL will work in partnership with other DSLs to ensure appropriate safeguarding action is taken in the wider local community.
- If a criminal offence has been committed, the DSL (or deputy) will discuss this with the police first to ensure that investigations are not compromised.
  - review the handling of any incidents to ensure that best practice was implemented, and policies/procedures are appropriate.
- Loxdale Primary School recognises that internet brings the potential for the impact of any sexual violence and sexual harassment concerns to extend further than the local community, and for a victim or alleged perpetrator to become marginalised and excluded by online communities.
  - Loxdale Primary School recognises the potential for repeat victimisation in the future if abusive content continues to exist somewhere online.
  - To help minimise concerns, Loxdale Primary School will ensure that all members of the community are made aware of the potential social, psychological and criminal consequences of online sexual violence and sexual harassment by implementing a range of age and ability appropriate educational methods as part of our curriculum.
  - We will ensure that all members of the community are aware of sources of support regarding online sexual violence and sexual harassment between learners.

## 11.2 Youth produced sexual imagery (“sexting”)

- Loxdale Primary School recognises youth produced sexual imagery (also known as “sexting”) as a safeguarding issue; all concerns will be reported to and dealt with by the DSL (or deputy).
- We will follow the advice as set out in the non-statutory UKCIS guidance: '[Sexting in schools and colleges: responding to incidents and safeguarding young people](#)'
  - Youth produced sexual imagery or 'sexting' is defined as the production and/or sharing of sexual photos and videos of and by young people who are under the age of 18. It includes nude or nearly nude images and/or sexual acts.
  - It is an offence to possess, distribute, show and make indecent images of children. The Sexual Offences Act 2003 defines a child, for the purposes of indecent images, as anyone under the age of 18.
- Loxdale Primary School will ensure that all members of the community are made aware of the potential social, psychological and criminal consequences of creating or sharing youth produced



sexual imagery by implementing preventative approaches, via a range of age and ability appropriate educational methods.

- We will ensure that all members of the community are aware of sources of support regarding the taking and sharing of youth produced sexual imagery.
- We will respond to concerns regarding youth produced sexual imagery, regardless of whether the incident took place on site or using setting provided or personal equipment.
- We will not:
  - view any suspected youth produced sexual imagery, unless there is no other option, or there is a clear safeguarding need or reason to do so.
- If it is deemed necessary, the imagery will only be viewed where possible by the DSL, and any decision making will be clearly documented.
  - send, share, save or make copies of content suspected to be an indecent image/video of a child (i.e. youth produced sexual imagery) and will not allow or request learners to do so.
- If made aware of an incident involving the creation or distribution of youth produced sexual imagery, we will:
  - act in accordance with our child protection policies and the relevant local procedures.
  - ensure the DSL (or deputy) responds in line with the [UKCIS](#) guidance.
  - Store any devices containing potential youth produced sexual imagery securely
    - If content is contained on learners personal devices, they will be managed in accordance with the DfE '[searching screening and confiscation](#)' advice.
    - If a potentially indecent image has been taken or shared on our network or devices, we will act to block access to all users and isolate the image.
  - carry out a risk assessment in line with the [UKCIS](#) guidance which considers the age and vulnerability of learners involved, including the possibility of carrying out relevant checks with other agencies.
  - inform parents/carers about the incident and how it is being managed and provide support and signposting, as appropriate.
  - make a referral to Children's Social Work Service and/or the police, as deemed appropriate in line with the [UKCIS](#) guidance.
  - provide the necessary safeguards and support for learners, such as offering counselling or pastoral support.
  - implement appropriate sanctions in accordance with our behaviour policy but taking care not to further traumatise victims where possible.
  - consider the deletion of images in accordance with the [UKCIS](#) guidance.
    - Images will only be deleted once the DSL has confirmed that other agencies do not need to be involved and are sure that to do so would not place a child at risk or compromise an investigation.
  - review the handling of any incidents to ensure that best practice was implemented; the leadership team will also review and update any management procedures, where necessary.



### 11.3 Online abuse and exploitation (including child sexual abuse and sexual or criminal exploitation)

- Loxdale Primary School recognises online abuse and exploitation, including sexual abuse and sexual or criminal exploitation, as a safeguarding issue and all concerns will be reported to and dealt with by the DSL (or deputy), in line with our child protection policy.
- Loxdale Primary School will ensure that all members of the community are aware of online child abuse and sexual or criminal exploitation, including the possible grooming approaches which may be employed by offenders to target learners, and understand how to respond to concerns.
- We will implement preventative approaches for online child abuse and exploitation via a range of age and ability appropriate education for learners, staff and parents/carers.
- We will ensure that all members of the community are aware of the support available regarding online child abuse and exploitation, both locally and nationally.
- We will ensure that the 'Click CEOP' report button used to report online child sexual abuse is visible and available to learners and other members of our community on our school website.
- If made aware of an incident involving online child abuse and/or exploitation, we will:
  - act in accordance with our child protection policies and the relevant KSCMP procedures.
  - store any devices containing evidence securely.
    - If content is contained on learners personal devices, they will be managed in accordance with the DfE '[searching screening and confiscation](#)' advice.
    - If any evidence is stored on our network or devices, we will act to block access to other users and isolate the content.
  - if appropriate, make a referral to Children's Social Work Service and inform the police via 101, or 999 if a learner is at immediate risk.
  - carry out a risk assessment which considers any vulnerabilities of learner(s) involved, including carrying out relevant checks with other agencies.
  - inform parents/carers about the incident and how it is being managed and provide support and signposting, as appropriate.
  - provide the necessary safeguards and support for learners, such as, offering counselling or pastoral support.
  - review the handling of any incidents to ensure that best practice is implemented; leadership team will review and update any management procedures, where necessary.
- We will respond to concerns regarding online abuse and exploitation, regardless of whether the incident took place on our premises or using setting provided or personal equipment.
  - Where possible and appropriate, learners will be involved in decision making. If appropriate, they will be empowered to report concerns themselves with support, for example if the concern relates to online sexual abuse via CEOP: [www.ceop.police.uk/safety-centre/](http://www.ceop.police.uk/safety-centre/)
- If we are unclear whether a criminal offence has been committed, the DSL (or deputy) will obtain advice immediately through the Education Safeguarding Service and/or police.
- If made aware of intelligence or information which may relate to child sexual exploitation (on or offline), it will be passed through to the police by the DSL (or deputy).



- If members of the public or learners at other settings are believed to have been targeted, the DSL (or deputy) will seek advice from the police and/or the Education Safeguarding Service before sharing specific information to ensure that potential investigations are not compromised.

## 11.4 Indecent Images of Children (IIOC)

- Loxdale Primary School will ensure that all members of the community are made aware of the possible consequences of accessing Indecent Images of Children (IIOC) as appropriate to the age and ability.
- We will respond to concerns regarding IIOC on our equipment and/or personal equipment, even if access took place off site.
- We will seek to prevent accidental access to IIOC by using an Internet Service Provider (ISP) which subscribes to the Internet Watch Foundation (IWF) block list and by implementing appropriate filtering, firewalls and anti-spam software.
- If we are unclear if a criminal offence has been committed, the DSL (or deputy) will obtain advice immediately through the police and/or the Education Safeguarding Service.
- If made aware of IIOC, we will:
  - act in accordance with our child protection policy and the relevant KSCMP procedures.
  - store any devices involved securely.
  - immediately inform appropriate organisations, such as the IWF and police.
- If made aware that a member of staff or a learner has been inadvertently exposed to indecent images of children, we will:
  - ensure that the DSL (or deputy) is informed.
  - ensure that the URLs (webpage addresses) which contain the suspect images are reported to the IWF via [www.iwf.org.uk](http://www.iwf.org.uk) .
  - ensure that any copies that exist of the image, for example in emails, are deleted.
  - report concerns, as appropriate to parents and carers.
- If made aware that indecent images of children have been found on the setting provided devices, we will:
  - ensure that the DSL (or deputy) is informed.
  - ensure that the URLs (webpage addresses) which contain the suspect images are reported to the IWF via [www.iwf.org.uk](http://www.iwf.org.uk) .
  - inform the police via 101 or 999 if there is an immediate risk of harm, and Children's Social Work Service, as appropriate.
  - only store copies of images (securely, where no one else has access to them and delete all other copies) following a written request from the police.
  - report concerns, as appropriate to parents/carers.
- If made aware that a member of staff is in possession of indecent images of children on school provided devices, we will:
  - ensure that the Head Teacher is informed in line with our managing allegations against staff policy.
  - inform the Local LADO and other relevant organisations in accordance with our managing allegations against staff policy.
  - quarantine any devices until police advice has been sought.





## 11.5 Cyberbullying

- Cyberbullying, along with all other forms of bullying, will not be tolerated at Loxdale Primary School.
- Full details of how we will respond to cyberbullying are set out in our anti-bullying policy.

## 11.6 Online hate

- Online hate content, directed towards or posted by, specific members of the community will not be tolerated at Loxdale Primary School and will be responded to in line with existing policies, including child protection, anti-bullying and behaviour.
- All members of the community will be advised to report online hate in accordance with relevant policies and procedures.
- The police will be contacted if a criminal offence is suspected.
- If we are unclear on how to respond, or whether a criminal offence has been committed, the DSL (or deputy) will obtain advice through the Education Safeguarding Service and/or the police.

## 11.7 Online radicalisation and extremism

- As listed in this policy, we will take all reasonable precautions to ensure that learners and staff are safe from terrorist and extremist material when accessing the internet on site.
- If we are concerned that a learner or adult may be at risk of radicalisation online, the DSL (or deputy) will be informed immediately, and action will be taken in line with our child protection policy.
- If we are concerned that member of staff may be at risk of radicalisation online, the Head Teacher will be informed immediately, and action will be taken in line with the child protection and allegations policies.



# Responding to an Online Safety Concern Flowchart

## Key Local Contacts

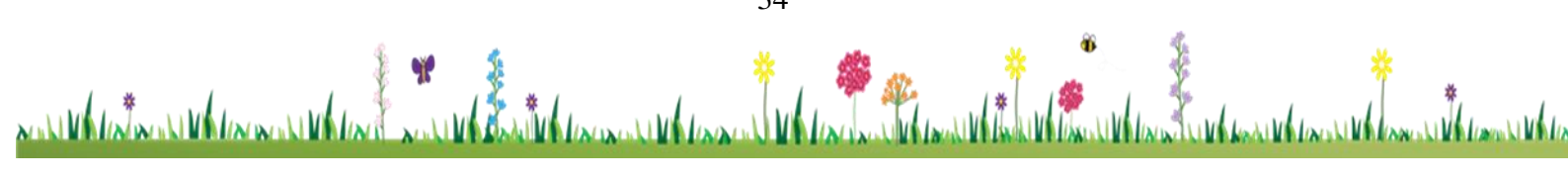
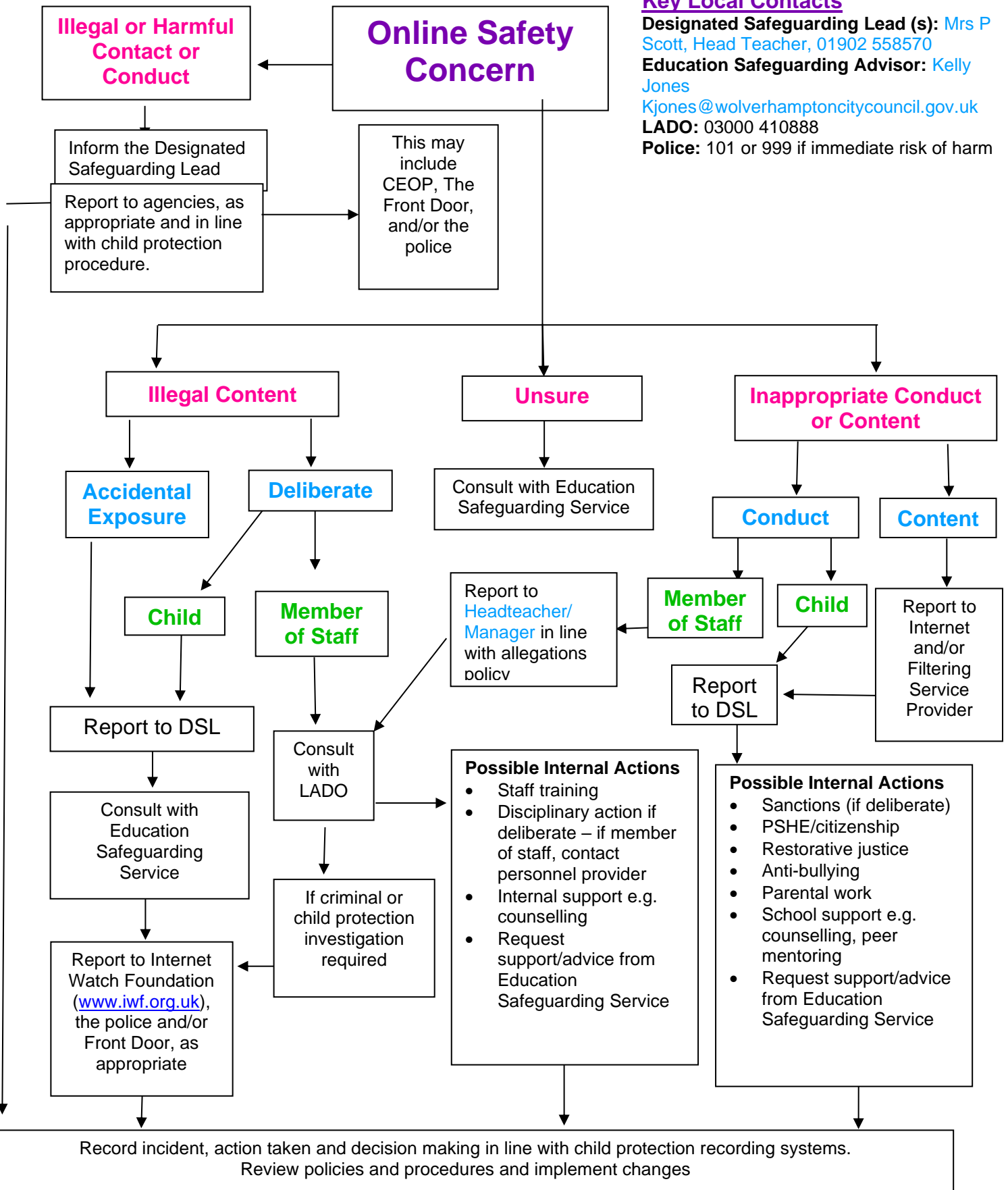
**Designated Safeguarding Lead (s):** Mrs P Scott, Head Teacher, 01902 558570

**Education Safeguarding Advisor:** Kelly Jones

[Kjones@wolverhamptoncitycouncil.gov.uk](mailto:Kjones@wolverhamptoncitycouncil.gov.uk)

**LADO:** 03000 410888

**Police:** 101 or 999 if immediate risk of harm



# Useful Links

## National Links and Resources for Settings, Learners and Parents/carers

- CEOP:
  - [www.thinkuknow.co.uk](http://www.thinkuknow.co.uk)
  - [www.ceop.police.uk](http://www.ceop.police.uk)
- Internet Watch Foundation (IWF): [www.iwf.org.uk](http://www.iwf.org.uk)
- UK Council for Internet Safety (UKCIS): [www.gov.uk/government/organisations/uk-council-for-internet-safety](http://www.gov.uk/government/organisations/uk-council-for-internet-safety)
- UK Safer Internet Centre: [www.saferinternet.org.uk](http://www.saferinternet.org.uk)
  - Professional Online Safety Helpline: [www.saferinternet.org.uk/about/helpline](http://www.saferinternet.org.uk/about/helpline)
  - Report Harmful Content: <https://reportharmfulcontent.com/>
- 360 Safe Self-Review tool for schools: [www.360safe.org.uk](http://www.360safe.org.uk)
- Childnet: [www.childnet.com](http://www.childnet.com)
  - Step Up Speak Up – Online Sexual Harassment Guidance: [www.childnet.com/resources/step-up-speak-up/guidance-and-training-for-schools-and-professionals](http://www.childnet.com/resources/step-up-speak-up/guidance-and-training-for-schools-and-professionals)
  - Cyberbullying Guidance: [www.childnet.com/resources/cyberbullying-guidance-for-schools](http://www.childnet.com/resources/cyberbullying-guidance-for-schools)
- Internet Matters: [www.internetmatters.org](http://www.internetmatters.org)
- Parent Zone: <https://parentzone.org.uk>
- Parent Info: <https://parentinfo.org>
- NSPCC: [www.nspcc.org.uk/onlinesafety](http://www.nspcc.org.uk/onlinesafety)
  - ChildLine: [www.childline.org.uk](http://www.childline.org.uk)
  - Net Aware: [www.net-aware.org.uk](http://www.net-aware.org.uk)
- Lucy Faithfull Foundation: [www.lucyfaithfull.org](http://www.lucyfaithfull.org)
- The Marie Collins Foundation: [www.mariecollinsfoundation.org.uk](http://www.mariecollinsfoundation.org.uk)
- Action Fraud: [www.actionfraud.police.uk](http://www.actionfraud.police.uk)
- Get Safe Online: [www.getsafeonline.org](http://www.getsafeonline.org)



# Acknowledgements and Thanks

This document and statements have been produced by The Education People Education Safeguarding Service with thanks to members of Kent Education Online Safety Strategy Group. Additional thanks to the UK Safer Internet Centre, South West Grid for Learning, Childnet , CEOP, The Judd School, Kingsnorth Primary School, Loose Primary School, Peter Banbury, Kent Police, Kent Schools Personnel Service (SPS), Kent Legal Services and Kent Libraries and Archives, for providing comments, feedback and support on previous versions.

